



CANADIAN
WILDLIFE HEALTH
COOPERATIVE



Creating a world
that is safe and sustainable
for wildlife and society

Canada's Wildlife Health Program

WHAT we do

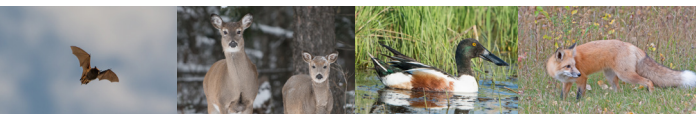
We promote and protect the health of wildlife and Canadians through leadership, partnership, investigation and action.

The Canadian Wildlife Health Cooperative (CWHC) is a “one-stop shop” that provides a Canada-wide perspective on wildlife health;

- Leading wildlife health strategies and programs
- Tracking wildlife health to know when to act
- Detecting emergence of new diseases
- Impacting policy and management decisions

The CWHC strives to be impactful and relevant in a rapidly changing world, supporting:

- Food safety and food security
- Public health and well-being
- Agriculture and the bio-economy
- Training wildlife health professionals
- Advocacy for wildlife health issues



CANADIAN
WILDLIFE HEALTH
COOPERATIVE

cwhc-rcsf.ca



CONTACT US

CWHC National Office
52 Campus Rd.
Saskatoon, SK S7N 5B4
800.567.2033
national@cwhc-rcsf.ca

FOLLOW US ONLINE

www.healthywildlife.ca
www.facebook.com/cwhcrgcsf
@cwhcrgcsf on Twitter

CANADA NEEDS A WILDLIFE HEALTH PROGRAM

Did you know?

- Wild animals are integral to our economic well-being
- Interactions between wild animals and agriculture affect international trade and our food production
- Diseases shared between wild animals, domestic animals and/or people have the potential to adversely affect health

The CWHC provides:

- Surveillance for wildlife diseases & targeted programs for Avian Influenza, West Nile Virus, Chronic Wasting Disease and Rabies.
- Discovering new diseases and investigating new approaches to wildlife health issues through research and risk assessments
- Advocating for wildlife health and developing strategies to confront the effects of climate change and cumulative effects on wild animals.

YOU CAN HELP!

SUBMIT OR REPORT WILDLIFE

cwhc-rcsf.ca/report

DONATE

cwhc-rcsf.ca/donate



CANADIAN
WILDLIFE HEALTH
COOPERATIVE

cwhc-rcsf.ca